



MIXING GROUP

Intelligent controller for state-of-the-art mixing technology

NEW!

The intelligent ram – iRam
– The intelligent ram controller



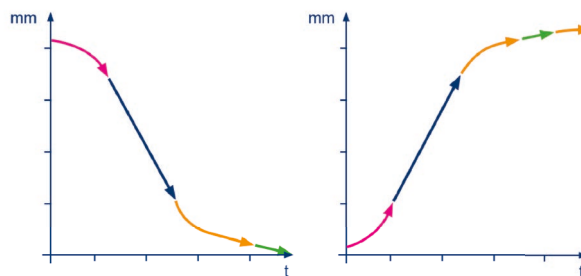
The intelligent ram – iRam

Basic version

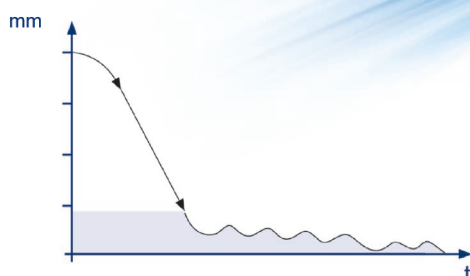
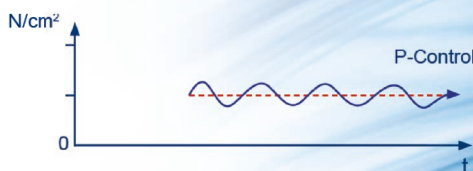


iRam basic functions

- Ram up, down and cleaning position
- Ram pressure control
- Ram floating
- Reduce pressure by drop door opening



Available for new and retrofit installations



- + Easy installation
- + Individual ram speed adjustment
- + Slowly approach of end positions
- + Fast and efficient pressure control
- + Increase system availability and thus increase the production output
- + Reducing of noise and thus improved working conditions for the operator at the mixer
- + Minimize wear
- + Included in ADVISE® CS



The intelligent ram – iRam

Extended version

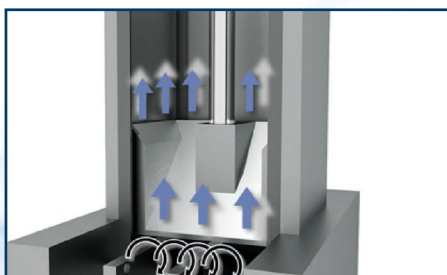


iRam extended functions

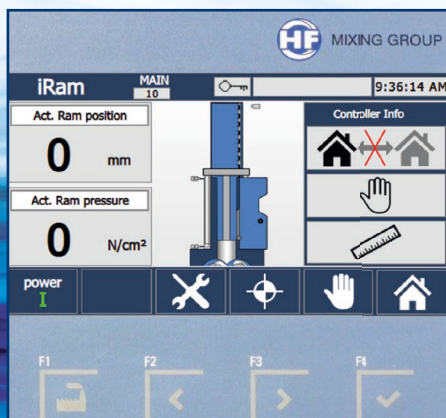
- Variable ram layback controlled by recipe parameter settings
- Ram „slow“ down and up movement controlled by recipe parameter settings

*HF MIXING GROUP hydraulic control (PLC) is required!

Available for new and retrofit installations

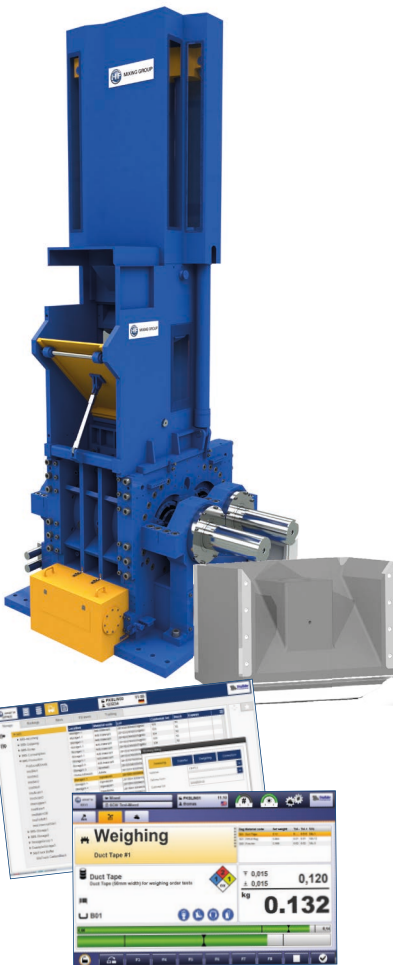


- + Easy installation
- + Possibility to achieve safe & better degassing
- + Possibility for improved distribution
- + Possibility for throughput increasing
- + Reduction of fillers on top of the ram
- + Reduction of raw material losses through dust collection system
- + Improved process oil injection achieving by sealed ram gap
- + Reduction of batch cycle time
- + Less ram cleaning time
- + iRam basic and extended functions are included in ADVISE® CS & ES





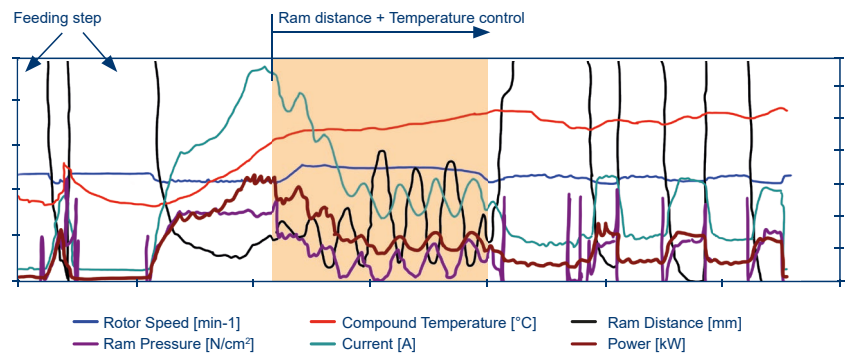
ADVISE® ES process controller – Ram position profile controller based on iRam



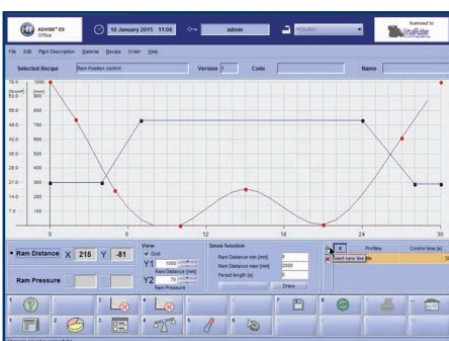
ADVISE® ES ram intelligent positions and pressure profile controller

ADVISE® ES profile designer with iRam intelligent position and pressure profile controller

*HF MIXING GROUP ADVISE® ES mixing room control is required!



- + Easy configuration of ram position profile control in the ADVISE® ES software
- + Simple design of individual ram and pressure profiles in the ADVISE® ES office application
- + Reduction of accident risks by degassing of the mixing chamber (WPC and silica) during controlled ram moves
- + Additional mixing effect when using the sinus function
- + The batch may be pushed partially up into the feeding chute to allow better dispersion to improve batch quality
- + Slowly incorporate fibers to prevent fiber nests (excessively compressed the fibers) in the compound, thereby improving the compound quality
- + Reduce the time required for ram lifting steps
- + Possible process optimisation for silica compounds





www.hf-mixinggroup.com